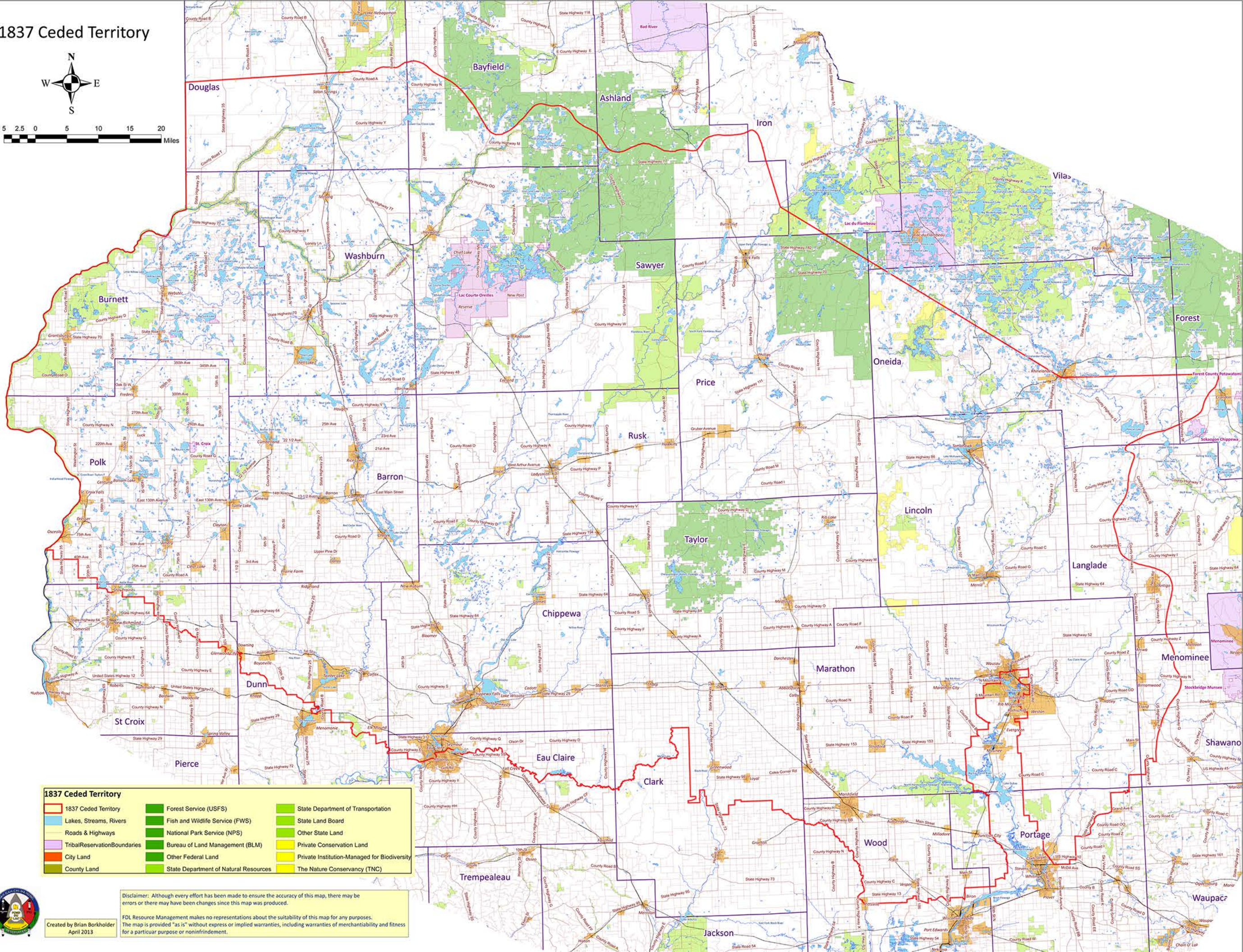
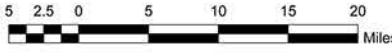


1837 Ceded Territory



1837 Ceded Territory

| | | |
|-------------------------------|---------------------------------------|--|
| 1837 Ceded Territory | Forest Service (USFS) | State Department of Transportation |
| Lakes, Streams, Rivers | Fish and Wildlife Service (FWS) | State Land Board |
| Roads & Highways | National Park Service (NPS) | Other State Land |
| Tribal Reservation Boundaries | Bureau of Land Management (BLM) | Private Conservation Land |
| City Land | Other Federal Land | Private Institution-Managed for Biodiversity |
| County Land | State Department of Natural Resources | The Nature Conservancy (TNC) |

Disclaimer: Although every effort has been made to ensure the accuracy of this map, there may be errors or there may have been changes since this map was produced.

FDL Resource Management makes no representations about the suitability of this map for any purposes. The map is provided "as is" without express or implied warranties, including warranties of merchantability and fitness for a particular purpose or noninfringement.

Created by Brian Borkholder
April 2013

